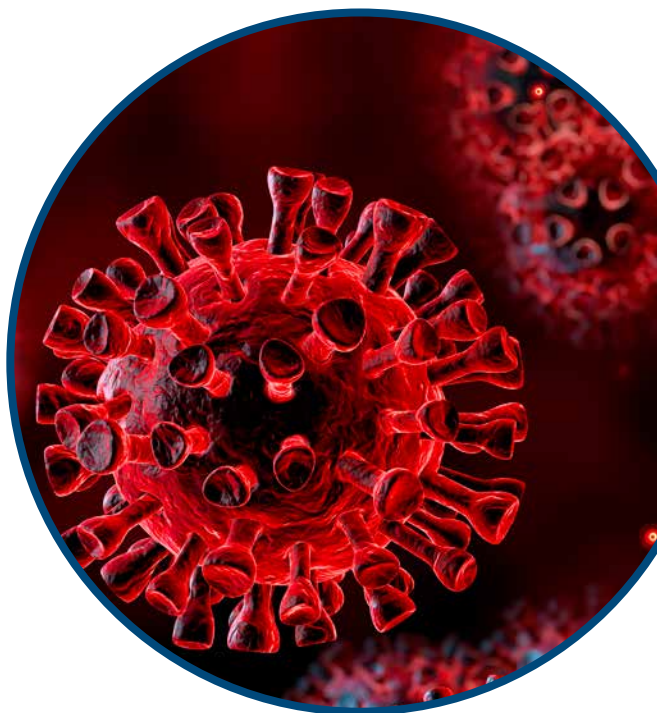


COVID-19 nucleoprotein ELISA Kit

For quantitative detection of nucleoprotein in serum, plasma, tissue homogenates, cell culture supernatant, cell culture lysate and other biological fluids (throat swab, nose swab)



Cat. No. 08440300

Size: 96 Tests

Reactivity: coronavirus (COVID-19,
SARS-CoV-2, 2019-nCoV)

Range: 62.5–4000 pg/mL

Sensitivity: 37.5 pg/mL

Storage: 2–8°C for 6 months

Principle: Sandwich ELISA

Revision Date: 2020-06

For Research Use Only

Table of Contents

1. Kit Components	3
2. Typical Data & Standard Curve	4
2.1 Specificity	5
2.2 Recovery	5
2.3 Linearity	5
2.4 Precision	6
2.5 Stability	6
3. Operation Procedure	7
3.1 Principle of the Assay	7
3.2 Precautions	8
3.3 Materials Required, But Not Supplied	8
3.4 Washing	9
3.5 Sample Collection and Storage (universal)	9
3.6 Sample Dilution	10
3.7 Reagent Preparation and Storage	11
3.8 Assay Procedure	12
3.9 Summary	14
4. Related Products	15

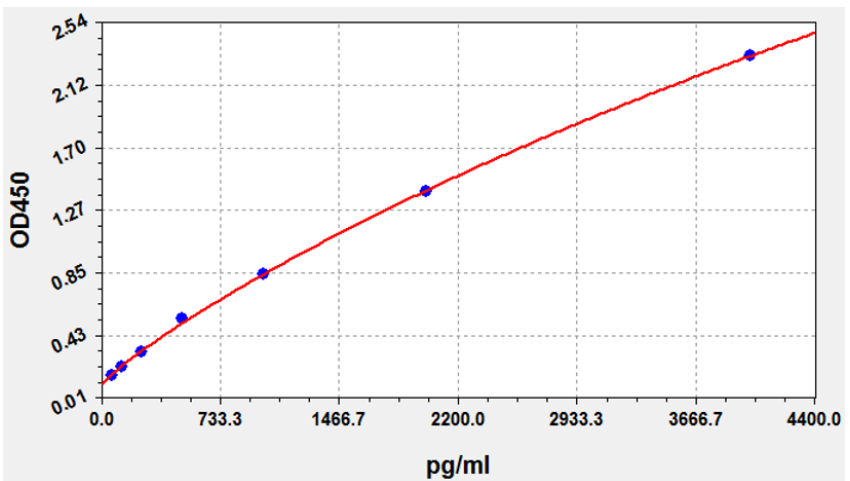
1. Kit Components

No.	Item	Specs (48T/96T)	Storage
E001	ELISA Microplate (Dismountable)	8×6/8×12	2–8°C /-20°C
E002	Lyophilized Standard	1 vial/2 vial	2–8°C /-20°C
E039	Sample/Standard Dilution Buffer	10 mL/20 mL	2–8°C
E003	Biotin-labeled Antibody (Concentrated)	60 µL/120 µL	2–8°C (protect from light)
E040	Antibody Dilution Buffer	5 mL/10 mL	2–8°C
E034	HRP-Streptavidin Conjugate (SABC)	60 µL/120 µL	2–8°C (protect from light)
E049	SABC Dilution Buffer	5 mL/10 mL	2–8°C
E024	TMB Substrate	5 mL/10 mL	2–8°C (protect from light)
E026	Stop Solution	5 mL/10 mL	2–8°C
E038	Wash Buffer (25X)	15 mL/30 mL	2–8°C
E006	Plate Sealer	3/5 pieces	
E007	Product Description	1 copy	

2. Typical Data & Standard Curve

Results of a typical standard operation of a nucleoprotein ELISA Kit are listed below. This standard curve was generated at our lab for demonstration purposes only. Users shall obtain a standard curve via their own experimental results. (N/A = not applicable)

STD (pg/ml)	OD-1	OD-2	Average	Corrected
0	0.121	0.125	0.123	0.000
62.5	0.162	0.170	0.166	0.043
125	0.218	0.228	0.223	0.100
250	0.330	0.314	0.322	0.199
500	0.541	0.557	0.549	0.426
1000	0.824	0.866	0.845	0.722
2000	1.422	1.388	1.405	1.282
4000	2.262	2.374	2.318	2.195



2.1 Specificity

Type of Virus	Cross Reaction	Type of Virus	Cross Reaction
SARS-CoV-2	100%	MERS	26%
SARS	73%	H1N1 (A/B)	< 2%

NOTE: Limited by current skills and knowledge, it is difficult for us to complete the cross-reactivity detection between nucleoprotein and all the analogues; therefore, cross reaction may still exist.

2.2 Recovery

Matrices listed below were spiked with various levels of nucleoprotein and the recovery rates were calculated by comparing the measured value to the expected amount of nucleocapsid protein in samples.

Matrix	Recovery Range (%)	Average (%)
Serum (n=5)	88-104	97
EDTA Plasma (n=5)	87-104	96
Heparin Plasma (n=5)	87-103	95

2.3 Linearity

The linearity of the kit was assayed by testing samples spiked with appropriate concentration of nucleoprotein and their serial dilutions. The results were demonstrated by percentage of calculated concentration to the expectation.

Sample	1:2	1:4	1:8
Serum (n=5)	86-98%	88-102%	88-95%
EDTA Plasma (n=5)	84-100%	85-88%	82-99%
Heparin Plasma (n=5)	80-97%	81-98%	82-96%

2.4 Precision

Intra-Assay: CV < 8%

Inter-Assay: CV < 10%

2.5 Stability

The stability of the ELISA kit is determined by the loss rate of activity. The loss rate of this kit is less than 10% within the expiration date under appropriate storage conditions.

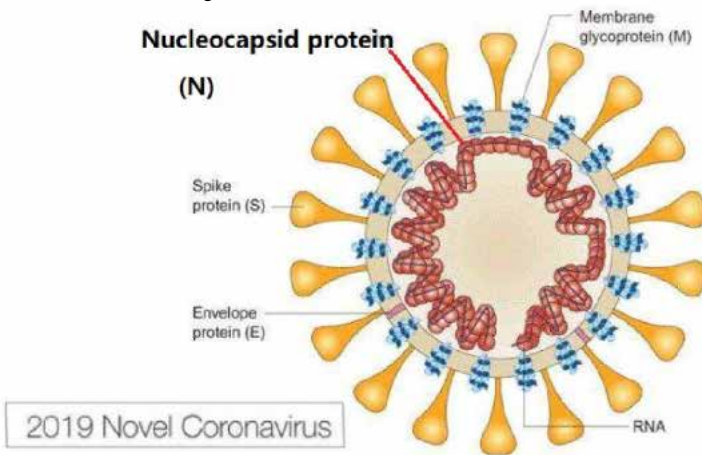
Standard (n=5)	37 °C for 1 month	2–8 °C for 6 months
Average (%)	80	95-100

To minimize additional influence on performance, operation procedures and lab conditions, especially room temperature, air humidity, and incubator temperatures should be strictly controlled.

3. Operation Procedure

3.1 Principle of the Assay

This kit was designed based on sandwich enzyme-linked immunosorbent assay technology. Capture antibody (monoclonal) was pre-coated onto 96-well plates. The biotin-conjugated antibody (monoclonal) was used as detection antibodies. Standards, test samples and biotin-conjugated detection antibody were added to the wells subsequently and washed with wash buffer. HRP-Streptavidin was added, and unbound conjugates were washed away with wash buffer. TMB substrates were used to visualize the HRP enzymatic reaction. TMB was catalyzed by HRP to produce a blue color product that changed to yellow after adding acidic stop solution. The density of yellow is proportional to the target amount of sample captured in the plate. Read the O.D. absorbance at 450 nm in a microplate reader to calculate the concentration of target.



Sequence of Nucleocapsid protein (antigen)

```
MSDNGPQNQRNAPRITFGGPSDSTGSNQNNGERSGARSKQRRPQGLPNNTAS
WFTALTQHGKEDLKFRGQGVPIINTNSSPDDQIGYYRRATRRIRGGDGKMKDLSPR
WYFYFLGTGPEAGLPYGANKDGIWVATEGALNTPKDHIGTRNPANNAIIVLQLPQGT
TLPKGFYAEGSRGGSQASSRSSRSRNSSRNSTPGSSRGTSFARMAGNGGDAA
LALLLLDRLNQLESKMSGKGGQQQQGQVTVTKKSAAEASKKPRQKRTATKAYNVTQA
FGRRGPEQTQGNFGDQELIRQGTDYKHWPQIAQFAPSASAFFGMSRIGMEVTPS
GTWLTYTGAIKLDDKDPNFKDQVILLNKHIDAYKTFPPTPEPKDKKKKADETQALPQRQK
KQQTVTLLPAADLDDFSKQLQSSMSSADSTQA
```

3.2 Precautions

1. To inspect the validity of experiment operation and the appropriateness of sample dilution proportion, a pilot experiment using standards and a small number of samples is recommended.
2. After opening and before using, keep plate dry.
3. Before using the kit, spin tubes and bring down all components to the bottom of the tubes.
4. Store TMB reagents to avoid light.
5. The washing process is very important; incomplete washing can cause a false positive reading and high background.
6. Duplicate well assay is recommended for both standard and sample testing.
7. Avoid letting the microplate dry during the assay - dry plates may inactivate components on the plate.
8. Do not re-use tips and tubes to avoid cross-contamination.
9. Avoid mixing reagents from different batches to perform an assay.

3.3 Materials Required, But Not Supplied

- Microplate reader (wavelength: 450 nm)
- 37°C incubator
- Automated plate washer
- Precision single and multi-channel pipette and disposable tips
- Clean tubes and Eppendorf tubes
- Deionized or distilled water

3.4 Washing

Manual: Discard the solution in the plate without touching the side walls. Clap the plate on absorbent filter papers or other absorbent material. Fill each well completely with 350 μ L Wash Buffer and soak for 1 to 2 minutes, then aspirate contents from the plate and clap the plate on absorbent filter paper or other absorbent material.

Automated: Aspirate all wells, then wash plate with 350 μ L Wash Buffer. After the final wash, invert plate and clap the plate on absorbent filter paper or other absorbent material. It is recommended that the washer be set to soak for 1 minute.

NOTE: Set the height of the needles; be sure the fluid can be sipped up completely.

3.5 Sample Collection and Storage (universal)

- **Serum:** Place whole blood sample at room temperature for 2 hours or place at 2–8°C overnight, then centrifuge for 20 minutes at approximately 1000 \times g. Collect the supernatant and perform the assay immediately. Blood collection tubes should be disposable, non-pyrogenic, and free from endotoxins.
- **Plasma:** Collect plasma using EDTA- Na_2 or heparin as an anticoagulant. Centrifuge samples for 15 minutes at 1000 \times g at 2–8°C within 30 minutes of collection. Collect the supernatant and perform the assay immediately. Avoid hemolyzed, high cholesterol samples.
- **Tissue Homogenates:** As hemolyzed blood has relation to assay results, it is necessary to remove residual blood by washing tissue with pre-cooling PBS buffer (0.01 M, pH=7.4). Mince tissue after weighing and homogenize in PBS (the volume depends on the weight of the tissue; typically, 9 mL PBS would be appropriate for 1 gram tissue pieces; it is recommended to add protease inhibitors to the PBS) with a glass homogenizer on ice. To further break the cells, sonicate the suspension with an ultrasonic cell disrupter or subject it to freeze-thaw cycles. Centrifuge homogenates for 5 minutes at 5000 \times g to collect the supernatant. The total protein concentration was determined by BCA kit and the total protein concentration of each pore sample should not exceed 0.3 mg.
- **Cell Culture Supernatant:** Centrifuge supernatant for 20 minutes at 1000 \times g at 2–8°C to remove insoluble impurities and cell debris. Collect the clear supernatant and carry out the assay immediately.

- **Cell Culture Lysate:** Commercial RIPA kits recommend following the instructions provided. Generally, 0.5 mL RIPA lysis buffer would be appropriate for 2×10^6 cells; DNA must be removed. The total protein concentration was determined by BCA kit and the total protein concentration of each pore sample should not exceed 0.3 mg.
- **Other Biological Fluids:** (throat swab, nose swab) Centrifuge samples for 20 minutes at $1000 \times g$ at $2-8^\circ\text{C}$. Collect supernatant and carry out the assay immediately.

NOTE: Samples to be used within 5 days can be stored at $2-8^\circ\text{C}$; otherwise, store samples at -20°C (assay ≤ 1 month) or -80°C (assay ≤ 2 months) to avoid loss of bioactivity and contamination. Avoid multiple freeze-thaw cycles. Hemolyzed samples are not suitable for this assay.

3.6 Sample Dilution

The user should estimate the concentration of target protein in the test sample and select a proper dilution factor to ensure the diluted target protein concentration falls within the optimal detection range of the kit. Dilute the sample with the provided dilution buffer; several trials may be necessary. The test sample must be well mixed with the dilution buffer and standard curves and sample should be made during the pre-experiment. If samples have very high concentrations, dilute samples with PBS first, then dilute with Sample Dilution.

The matrix components in the sample will affect the test results and need to be diluted at least 1:2 with Sample Dilution Buffer prior to testing!

3.7 Reagent Preparation and Storage

Bring all reagents and samples to room temperature for 20 minutes before use.

1. Wash Buffer:

If crystals have formed in the concentrate, warm with a 40°C water bath (heating temperatures should not exceed 50°C) and mix gently until the crystals have completely dissolved. The solution should be cooled to room temperature before use.

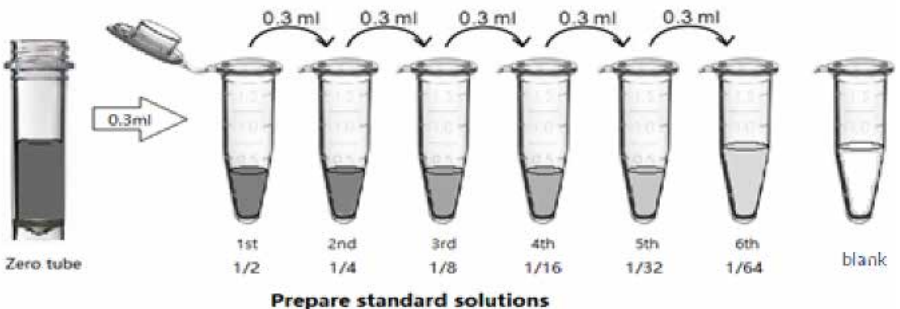
Dilute 30 mL (15 mL for 48T) Concentrated Wash Buffer into 750 mL (375 mL for 48T) Wash Buffer with deionized or distilled water. Return unused solution back to 2–8°C for storage.

2. Standards:

1. Add 1 mL Sample Dilution Buffer into one Standard tube (labeled as zero tube), keep the tube at room temperature for 10 minutes, and mix thoroughly.

NOTE: If the Standard tube concentration is higher than the range of the kit, please dilute it and label it as the zero tube.

2. Label 7 EP tubes with 1/2, 1/4, 1/8, 1/16, 1/32, 1/64 and blank, respectively. Add 0.3 mL of the Sample Dilution Buffer into each tube. Add 0.3 mL of the above Standard Solution (from zero tube) into 1st tube and mix thoroughly. Transfer 0.3 mL from 1st tube to 2nd tube and mix thoroughly. Transfer 0.3 mL from 2nd tube to 3rd tube and mix thoroughly, and so on. Sample Dilution Buffer was used for the blank control.



NOTE: It is best to use Standard Solutions within 15 min.

3. Preparation of Biotin-labeled Antibody Working Solution:

Prepare within 1 hour of initiating the experiment.

1. Calculate required total volume of the working solution: $0.1 \text{ mL/well} \times \text{quantity of wells}$. (Allow 0.1–0.2 mL more than the total volume.)
2. Dilute the Biotin-detection antibody with Antibody Dilution Buffer at 1:100 and mix thoroughly. (i.e. add 1 μL Biotin-labeled antibody to 99 μL Antibody Dilution Buffer.)

4. Preparation of HRP-Streptavidin Conjugate (SABC) Working Solution:

Prepare within 30 minutes of initiating the experiment.

1. Calculate required total volume of the working solution: $0.1 \text{ mL/well} \times \text{quantity of wells}$. (Allow 0.1–0.2 mL more than the total volume.)
2. Dilute the SABC with SABC Dilution Buffer at 1:100 and mix thoroughly. (i.e. add 1 μL of SABC into 99 μL of SABC Dilution Buffer.)

3.8 Assay Procedure

When diluting samples and reagents, they must be mixed completely and evenly. Before adding TMB into wells, equilibrate TMB Substrate for 30 min at 37°C. It is recommended to plot a standard curve for each test.

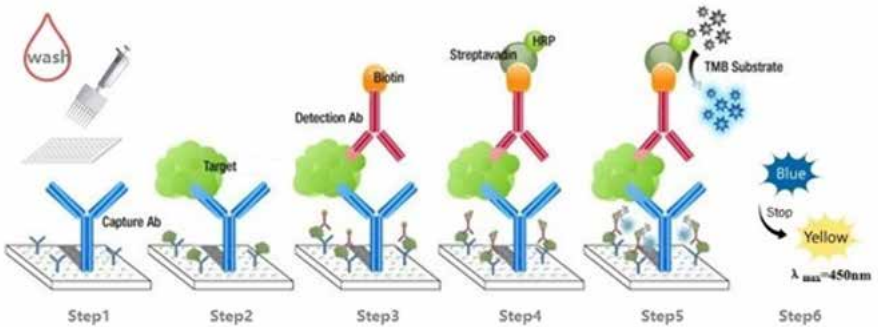
1. Set standard, **test samples (diluted at least 1:2 with Sample Dilution Buffer)** and control (blank) wells on the pre-coated plate, respectively, and record their positions. It is recommended to measure each standard and sample in duplicate. **Wash plate 2 times before adding standard, sample and control (blank) wells!**
2. **Prepare Standards:** Aliquot 100 μL of zero tube, 1st tube, 2nd tube, 3rd tube, 4th tube, 5th tube, 6th tube and Sample Dilution Buffer (blank) into the standard wells.
3. **Add Samples:** Add 100 μL of properly diluted sample into test sample wells.
4. **Incubate:** Seal the plate with a cover and incubate at 37 °C for 90 minutes.

5. **Wash:** Remove the cover and discard the plate contents, then wash the plate 2 times with Wash Buffer. Do NOT let the wells dry completely at any point.
6. **Biotin-labeled Antibody:** Add 100 μL of Biotin-labeled antibody working solution into above wells (standard, test sample and blank wells). Add the solution at the bottom of each well without touching the sidewall, cover the plate and incubate at 37°C for 60 minutes.
7. **Wash:** Remove the cover and wash plate 3 times with Wash Buffer, then let the Wash Buffer remain in the wells for 1–2 minutes each time.
8. **HRP-Streptavidin Conjugate (SABC):** Add 100 μL of SABC Working Solution to each well, cover the plate and incubate at 37 °C for 30 minutes.
9. **Wash:** Remove the cover and wash the plate 5 times with Wash Buffer, then let the wash buffer stay in the wells for 1–2 minutes each time.
10. **TMB Substrate:** Add 90 μL TMB Substrate into each well, cover the plate and incubate at 37°C in the dark within 10–20 minutes. (Note: The reaction time can be shortened or extended according to the actual color change, but not more than 30 minutes. The reaction can be terminated when a gradient appears in standard wells.)
11. **Stop:** Add 50 μL Stop Solution to each well. The color will turn yellow immediately. The addition order of Stop Solution should be the same as the TMB Substrate Solution.
12. **OD Measurement:** Read the O.D. absorbance at 450 nm in a Microplate Reader immediately after adding the Stop Solution.

Regarding calculation, (the relative O.D. 450) = (the O.D. 450 of each well) – (the O.D. 450 of blank well). The standard curve can be plotted as the relative O.D. 450 of each standard solution (Y) vs. the respective concentration of the standard solution (X). The target concentration of the samples can be interpolated from the standard curve. It is recommended to use some professional software to perform this calculation, such as Curve Expert 1.3 or 1.4.

NOTE: If the samples measured were diluted, multiply the dilution factor by the concentration from interpolation to obtain the concentration before dilution.

3.9 Summary



Step 1: Wash plate 2 times before adding Standard, **Sample (diluted at least 1:2 with Sample Dilution Buffer)** and Control (blank) wells!

Step 2: Add 100 μ L standard or sample to each well and incubate for 90 minutes at 37°C.

Wash step: Aspirate and wash plates 2 times.

Step 3: Add 100 μ L Biotin-labeled antibody working solution to each well and incubate for 60 minutes at 37°C.

Wash step: Aspirate and wash plate 3 times.

Step 4: Add 100 μ L SABC Working Solution to each well and incubate for 30 minutes at 37°C.

Wash step: Aspirate and wash plate 5 times.

Step 5: Add 90 μ L TMB Substrate Solution. Incubate 10–20 minutes at 37°C.

Step 6: Add 50 μ L Stop Solution. Read at 450 nm immediately and perform calculations.

4. Related Products

Product Name	Cat. No.
Human anti-SARS-CoV-2 IgG ELISA Kit	08440100
Human anti-SARS-CoV-2 IgM ELISA Kit	08440200
Anti-coronavirus (SARS-CoV-2) spike S1, mouse, mAb	0872030
Anti-coronavirus (SARS-CoV-2) spike S2, mouse, mAb	0872040
Anti-coronavirus (SARS-CoV-2) spike S2 (B), mouse, mAb	0872041
SARS-CoV-2 Nucleocapsid Protein, His tag (<i>E. Coli</i>)	0872050
ACE2, His tag (<i>E. Coli</i>)	0872060



One Call. One Source. A World of Life Science Products.

- Apoptosis
- Cell Biology
- Culture Growth Media
- FastPrep® Sample Prep
- Immunology
- Molecular Biology
- Adsorbents
- Biochemicals
- Fine Chemicals
- Labware
- Dosimetry
- Research Diets
- SafTest™ Food Quality
- Diagnostics
- Drugs of Abuse
- Infectious Disease
- EIA/RIA

MP Biomedicals

Americas: 800.854.0530 | custserv.na@mpbio.com

APAC: +65 6775.0008 | custserv.ap@mpbio.com

Europe: +33 3.88.67.54.25 | custserv.eur@mpbio.com

LEARN MORE

www.mpbio.com